

Logout Jury

Jury
> Scorecard

Mock Jury 2015 presented by ZAPP and the Saint Louis Art Fair Juror Scorecard

ID# 984958

Statement Wire mobiles. Each piece begins as an original clay figure, these are reproduced in wax using molds. Wire is hand woven, stitch by stitch around these wax forms and the wax is melted away.

Discipline Metalwork

Score

5 4 3 2 1

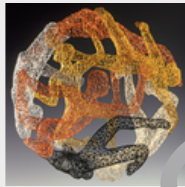
Comments



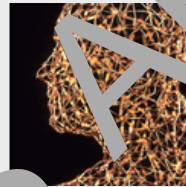
\$1600.00



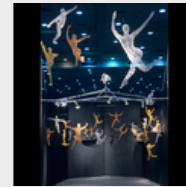
\$14000



\$4800.00



\$1800.00



\$0.00

ID# 984929

Statement My copper repousse process incorporates an old craft form with my variations to develop an art technique unique to my creations. My work begins as an original nature-inspired design, embossed in a sheet copper, then worked to form a dimensional image.

Discipline Metalwork

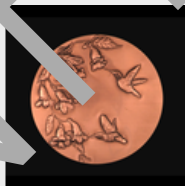
Score

5 4 3 2 1

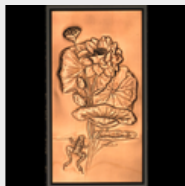
Comments



\$360.00



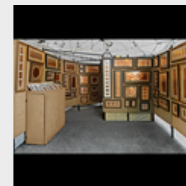
\$180.00



\$340.00



\$360.00



\$0.00

ID# 993102

Statement I draw from a wide range of metals: Copper, silver, bronze and mild steel. Techniques used are: fabrication, forming, fold forming, lost wax casting, raising and welding. Various patina's are used for color, including Prisma color pencil to achieve fine detail of various plants.

Discipline Metalwork

Score

5 4 3 2 1

Comments



\$3000.00



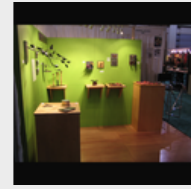
\$3,000



\$2,800



\$600



\$

ID# 984954

Statement I hand forge metal using blacksmiths techniques and joinery to create contemporary furnishings. The table tops are an acrylic and the lamp shade is made from mica.

Discipline Metalwork

Score

5 4 3 2 1

Comments



\$3800



\$2600



\$1250



\$2000



\$

ID# 987382

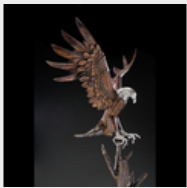
Statement Stainless steel sheets are hand formed with old school tools, welded, ground, sanded and polished to whimsical and realistic pieces of art

Discipline Metalwork

Score

5 4 3 2 1

Comments



\$9500.00



\$12,500



\$9500.00



\$7500.00



\$0.00

Displaying Rows 1-5

Save Scores

Save Scores and Return to Main Menu